



# Introduction

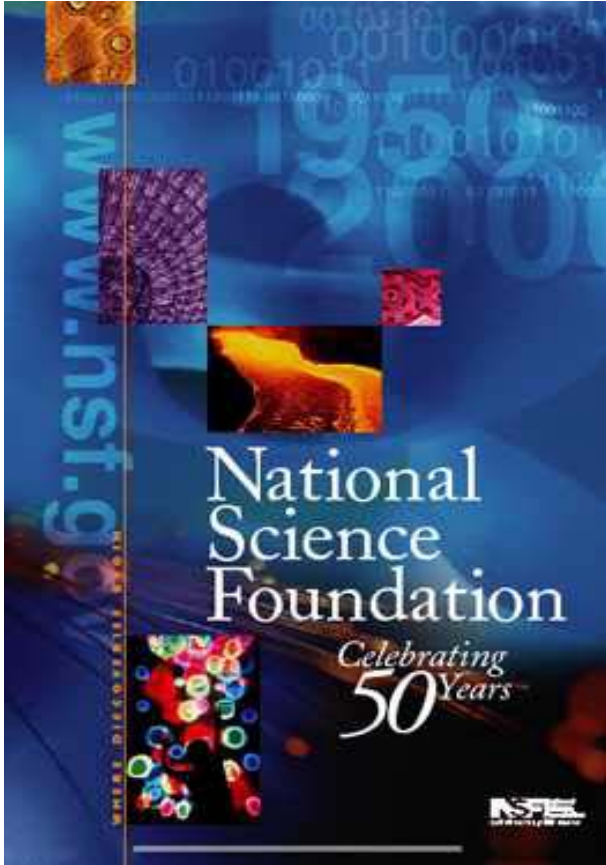
and

# NSF Overview





# Vannevar Bush And Science: The Endless Frontier







# The Endless Frontier Recommendations

**Universities should be the nation's primary basic research infrastructure**

**Federal funds should do double duty:**

**Procure research results**

**Educate the next generation**

**Award research grants based on merit**

**Establish a national science foundation**





# NSF Act of 1950

**Encourage & develop a national policy for the promotion of basic research and education in the math, physical, medical, biological, engineering and other sciences**





# NSF Act: Authorizations

## Act of 1950

- **Initiate and support:**
  - **Basic research**
  - **Programs to strengthen research potential**
  - **Science education programs at all levels**
- **Award scholarships and fellowships**
- **Foster international S&T**
- **Avoid “undue concentration”**
- **Provide a central clearinghouse for data on science and engineering and information for policy formulation**

## Subsequent Authorizations

- **Foster and support the development and use of computer and other technologies**
- **Evaluate the status and needs of the various sciences and fields of engineering**
- **Promote equal opportunities in science and engineering**





# Vision

*NSF envisions a nation that capitalizes on new concepts in science and engineering and provides global leadership in advancing research and education*





# NSF in a Nutshell

- **Independent Agency**
- **Primarily Uses Grant Mechanism**
- **Low Administrative Costs**
- **Discipline-based structure**







# The National Science Board







# Office of International Science and Engineering

**Provides innovative awards  
and supplements that promote research  
excellence through new international  
collaboration and that develop the next  
generation of globally engaged scientists**

[www.nsf.gov/oise](http://www.nsf.gov/oise)





# Office of Polar Programs

**Manages and initiates National Science Foundation funding for basic research and its operational support in the Arctic and the Antarctic.**





# **Rotators (IPAs): Our Leavening Ingredient**

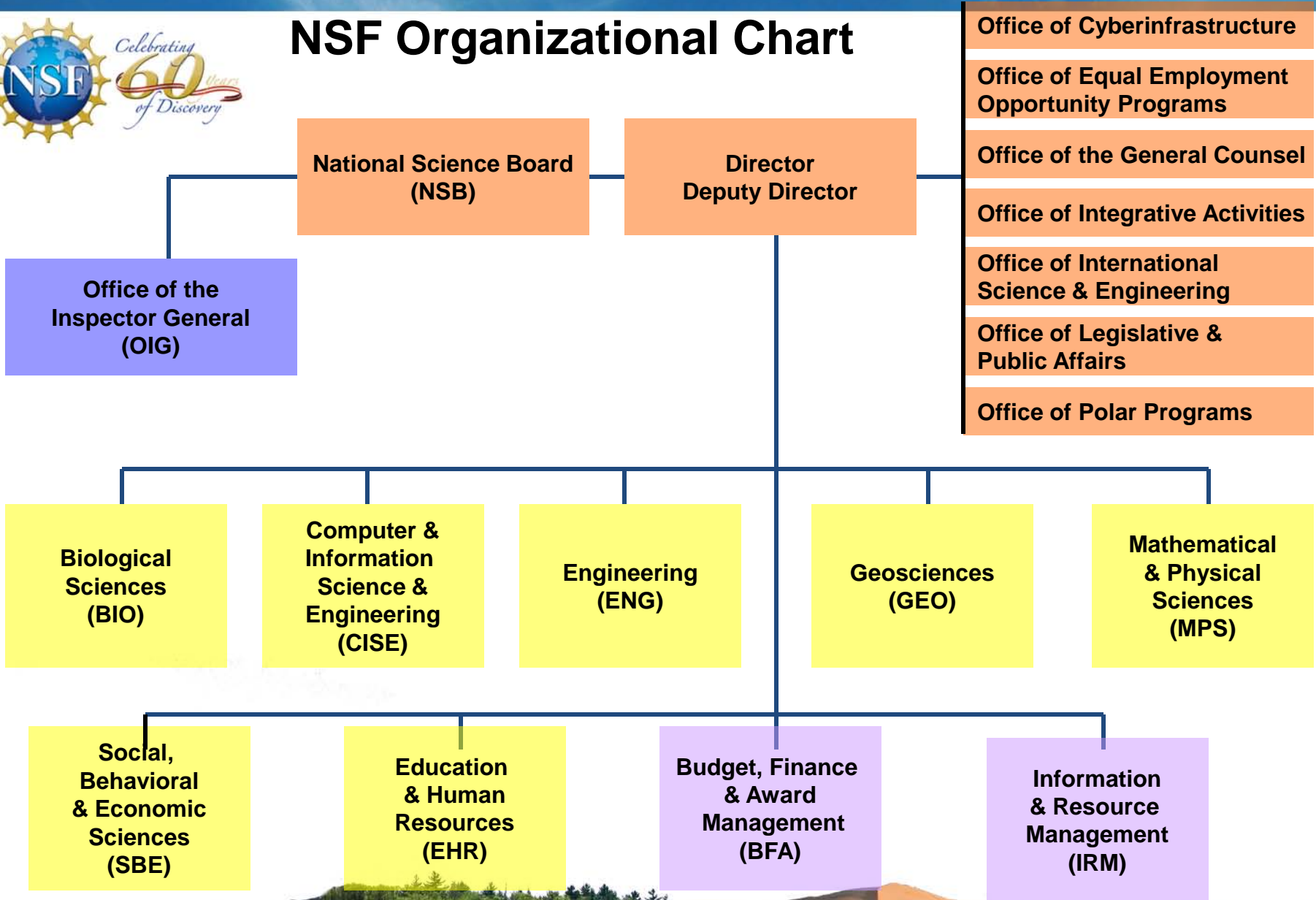
## **Intergovernmental Personnel Act Visiting Scientists**





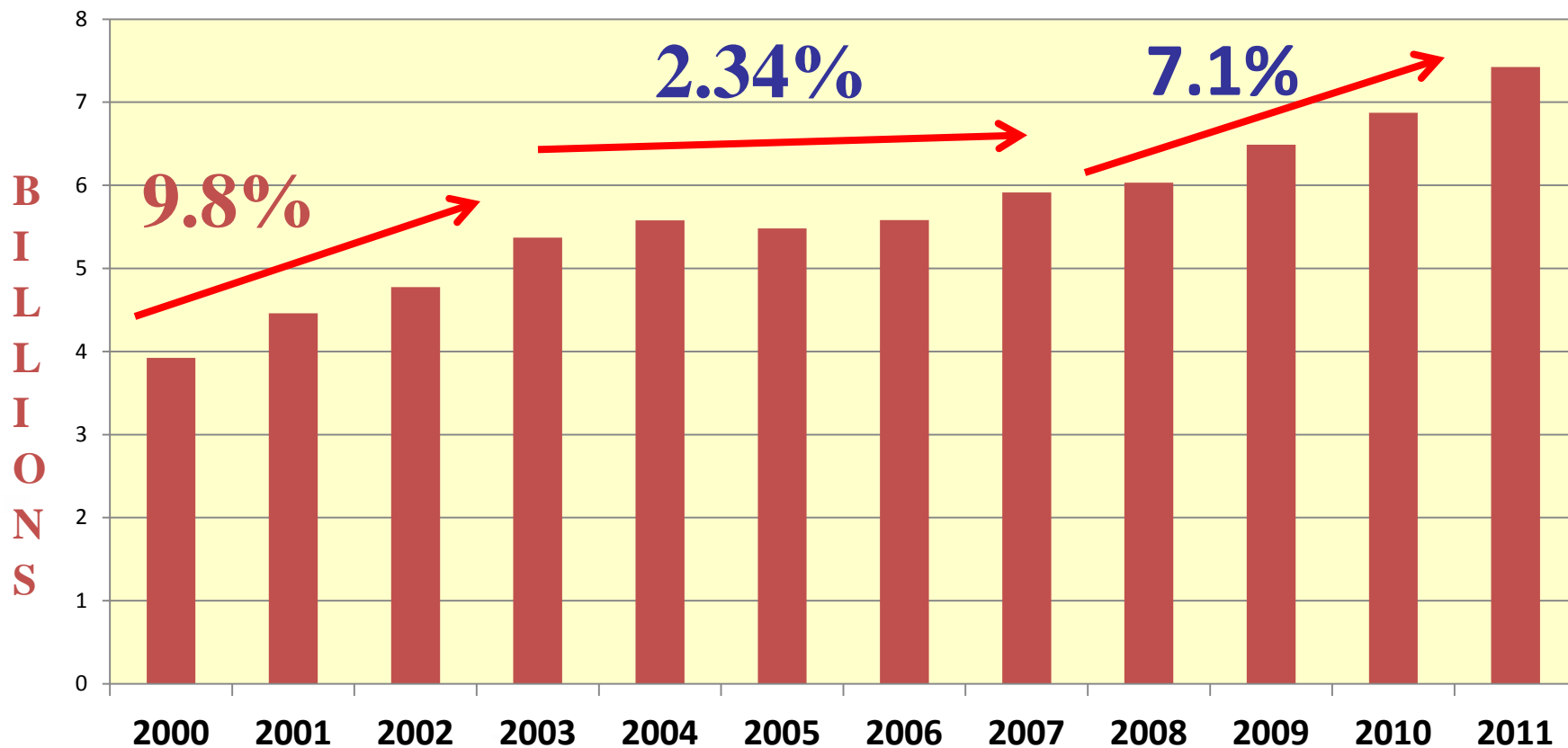


# NSF Organizational Chart





# Appropriations For NSF 2000 – 2011 Request



# NSF Appropriations: Fiscal 2011 Request

(\$millions)

Account	2011 CR	2012 Request	House Committee Bill
R&RA	\$5,164,489	\$6,253.54	\$5,606,964
MREFC	\$126,228	\$224.68	\$100,000
EHR	\$861,109	\$911.20	\$835,000
AOAM	\$303,435	\$357.74	\$299,400
NSB	\$4.45	\$4.84	\$4.53
OIG	\$15,901	\$14.35	\$13,972
<b>Total NSF</b>	<b>\$7,040,647</b>	<b>\$7,767.00</b>	<b>\$6,855,342</b>





The background features a complex, abstract design. It consists of a dense network of thin, multi-colored lines (orange, yellow, blue, purple) that appear to be tangled and radiating from a central point. These lines are overlaid on a grid of small, repeating geometric shapes, possibly triangles or squares, which are colored in shades of green, blue, and yellow. The overall effect is one of dynamic energy and interconnectedness.

# Proposal, Award and Funding Trends





# NSF Customers

- **U.S. Universities and Colleges**
- **U.S. Nonprofit, Nonacademic Organizations**
- **U.S. For-Profit Organizations**
- **State/Local Educational Organizations**
- **Unaffiliated U.S. Scientists, Engineers, Educators, & Citizens**
- **NSF Rarely Supports Foreign Organizations or Other Federal Agencies**

➤ **Program Solicitations may establish more restrictive eligibility**





# **NSF PROPOSAL STATISTICS (FY 2010)**

- **55,562 proposal actions**
- **~259,000 reviews**
- **~50,000 reviewers**
- **13,015 awards**
- **23.0% funding rate  
(Research 20%)**







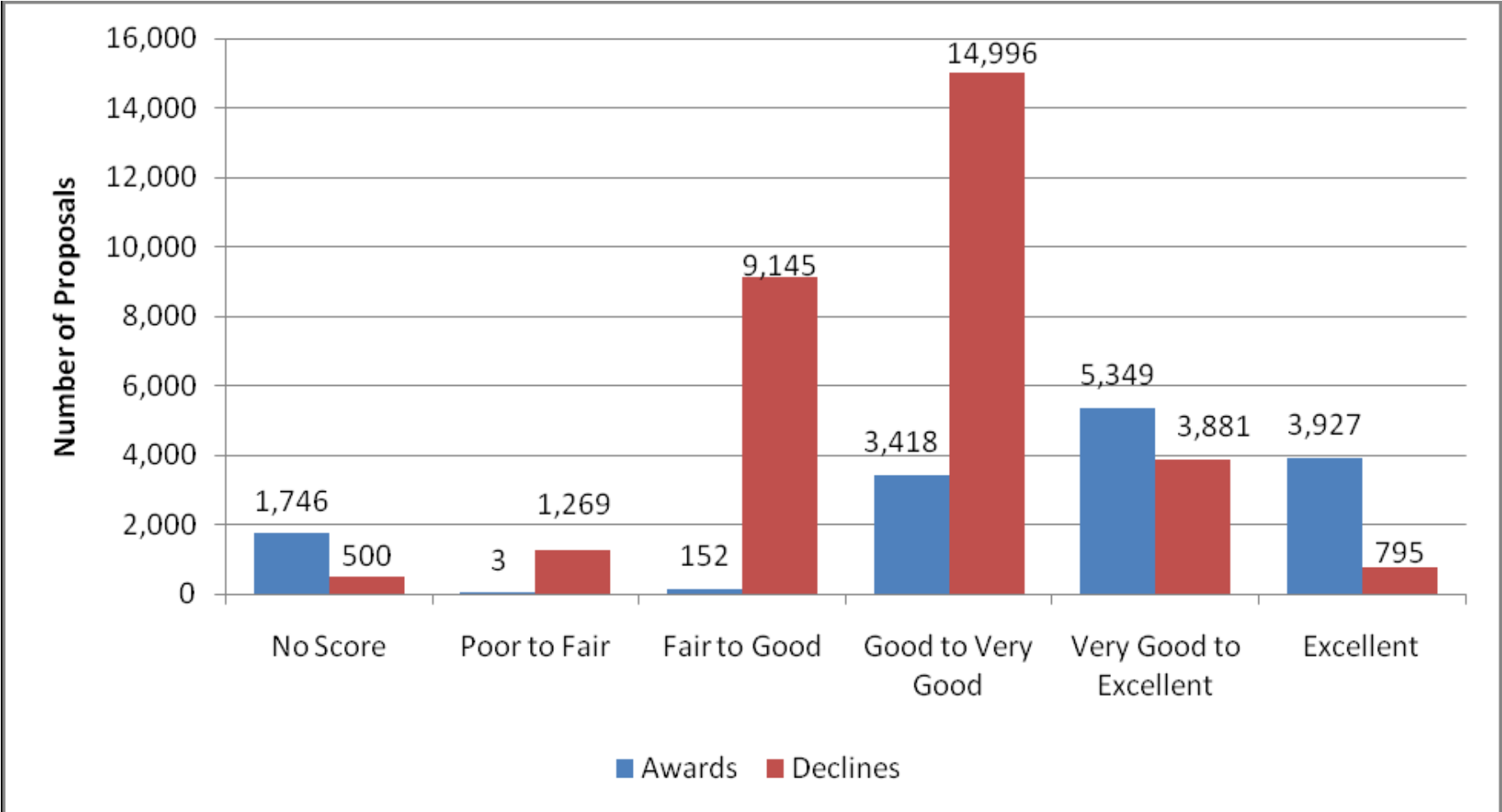
# **NSF RESEARCH GRANT PROFILE (FY 2010)**

<b>Competitive awards (Research):</b>	<b>7,106</b>
<b>Average annual award:</b>	<b>\$167,052</b>
<b>Median annual award:</b>	<b>\$123,537</b>
<b>Average duration (research):</b>	<b>2.86 years</b>





## Distribution of Average Reviewer Ratings for Awards and Declines, FY 2009





An aerial photograph of a kelp forest in clear, turquoise water. The kelp stalks and dark, leafy canopies are visible beneath the surface, creating a dense, textured pattern. The water's clarity allows for a detailed view of the underwater vegetation.

# National Science Foundation Update

**\*And How To Find It**





SEARCH NSF Web Site

- HOME | FUNDING | AWARDS | DISCOVERIES | NEWS | PUBLICATIONS | STATISTICS | ABOUT | FastLane



Funding Opportunities

- Find Funding Opportunities
Upcoming Due Dates
How to Prepare Your Proposal
Funding Trends

Program Areas Select One

Quick Links Select One

Search Funding Opportunities

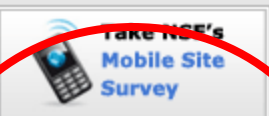
Special Notice

NSF Information Related to the American Recovery and Reinvestment Act of 2009
Building a Sustainable Energy Future: U.S. Actions for an Effective Energy Economy Transformation

Latest News See All

NSF Invites Media to Apply for Antarctic Reporting Slots Released September 1, 2009 Press Release

2009 Partnerships for Research and Education in Materials Released August 31, 2009 Press Release



Get NSF Updates by Email

Site Features

NSF at a Glance

News

For the News Media

Special Reports

Discoveries from NSF Research



National Science Foundation  
WHERE DISCOVERIES BEGIN

## E-mail Updates

Welcome to National Science Foundation Update, NSF's free e-mail subscription service. When you subscribe to this service, you will receive an e-mail message each time new content is added to the NSF web site in the categories you select.

To sign up for updates or change your subscriber preferences, please enter your e-mail address below. You may change your subscriber preferences or cancel your subscription at any time.

E-mail Address

Go

We will use your e-mail address to deliver the requested information or to access your subscriber preferences. We have a strict [privacy policy](#).

### [Subscription Help](#)

[Web Policies and Important Links](#)

[Privacy](#)

[FOIA](#)

[Help](#)

[Contact NSF](#)

[Contact Webmaster](#)

[SiteMap](#)



The National Science Foundation, 4201 Wilson Boulevard, Arlington, Virginia 22230, USA  
Tel: (703) 292-5111, FIRS: (800) 877-8339 | TDD: (800) 281-8749

## Category Based Subscriptions

To receive all updates in a category with no duplicates, check only the "All" item immediately below the category name. Also note that every item under a category receives "NSF-wide" updates for that category.

You may choose to receive emails when other types of content are added to the NSF web site. Subscribe by checking the box next to a content type; unsubscribe by unchecking the box. Subscribing to multiple items under the same category may result in duplicate messages for some updates.

When you are satisfied with your selection(s), click Save at the bottom of the page to continue. To continue without adding additional subscriptions, click Cancel.

You may also view your [subscriber preferences](#) to change your email address or other information.

- Discoveries
- Events
- Funding Opportunities
- Images and Video
- News
- Publications
- Statistics on U.S. Science and Engineering Resources
- Vacancies
- NSF Current Newsletter

Save

Cancel

[Web Policies and Important Links](#) | [Privacy](#) | [FOIA](#) | [Help](#) | [Contact NSF](#) | [Contact Webmaster](#) | [SiteMap](#)



The National Science Foundation, 4201 Wilson Boulevard, Arlington, Virginia 22230, USA  
Tel: (703) 292-5111, FIRS: (800) 877-8339 | TDD: (800) 281-8749





# Key Documents

- FY 2011 NSF Budget Request
  - <http://www.nsf.gov/about/budget/>
- Proposal and Award Policies and Procedures Guide
  - [http://www.nsf.gov/publications/pub\\_summ.jsp?ods\\_key=papp](http://www.nsf.gov/publications/pub_summ.jsp?ods_key=papp)
- Science and Engineering Indicators
  - <http://www.nsf.gov/sbe/srs/seind08/>
- When in doubt –
  - <http://www.nsf.gov/>

